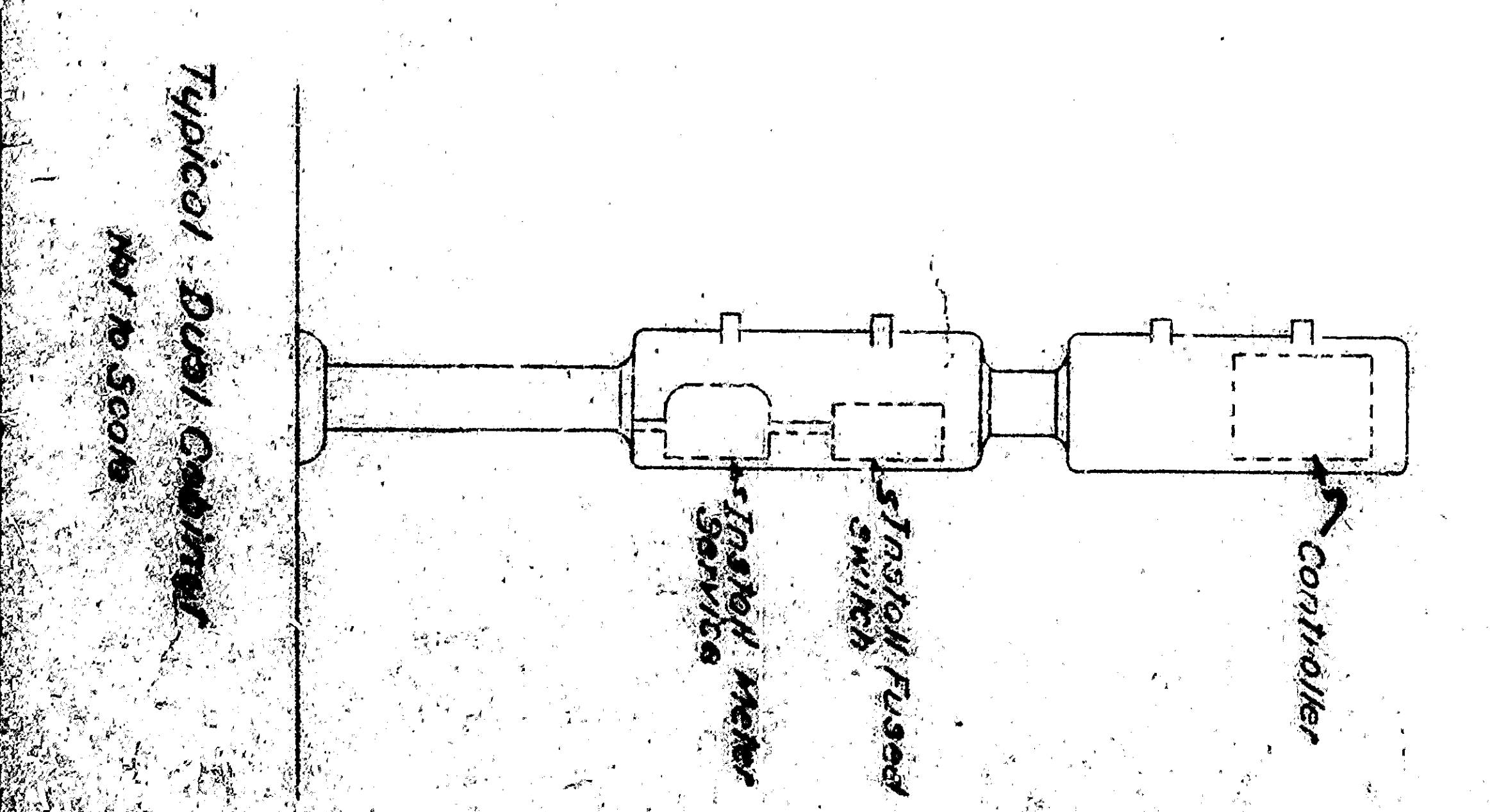
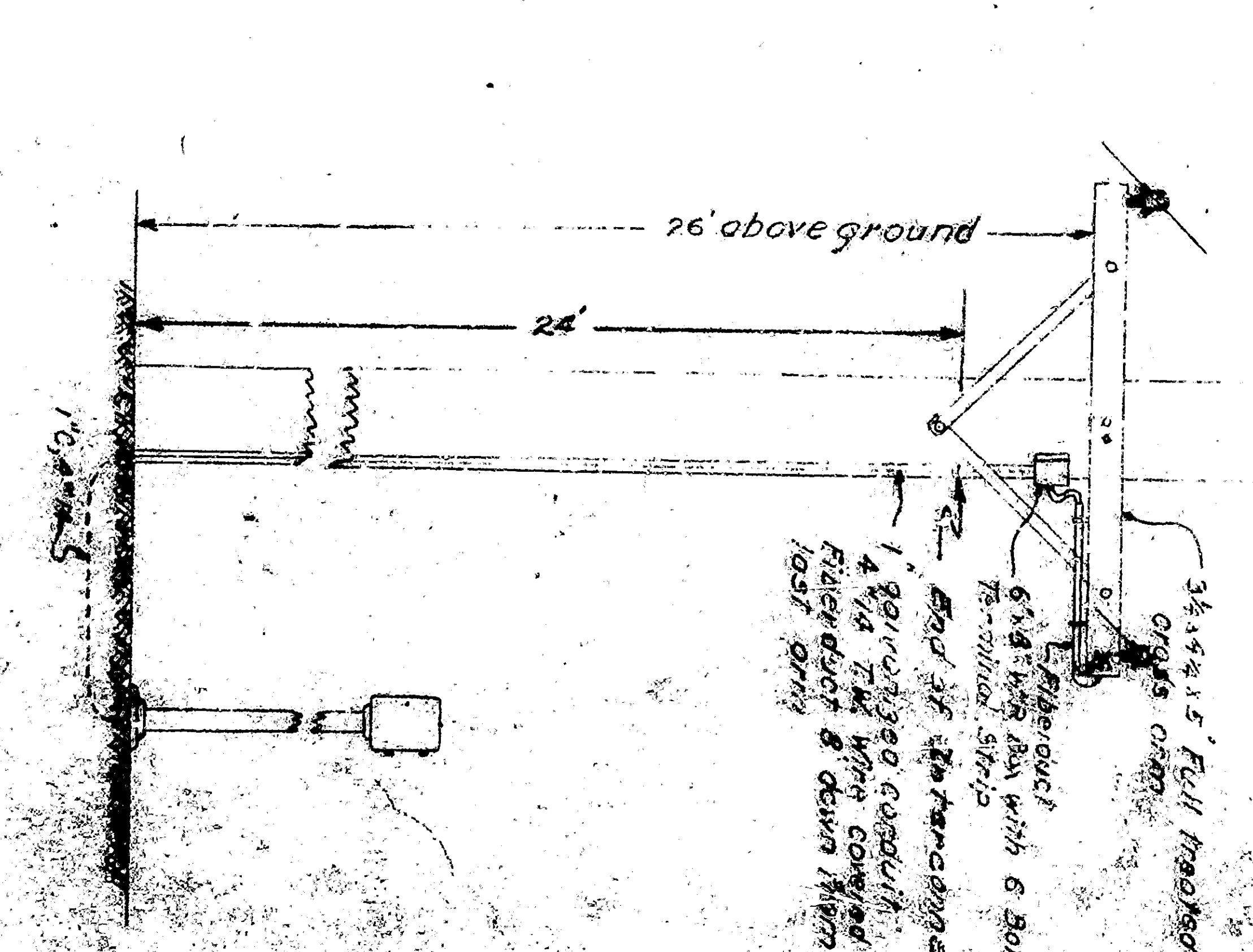
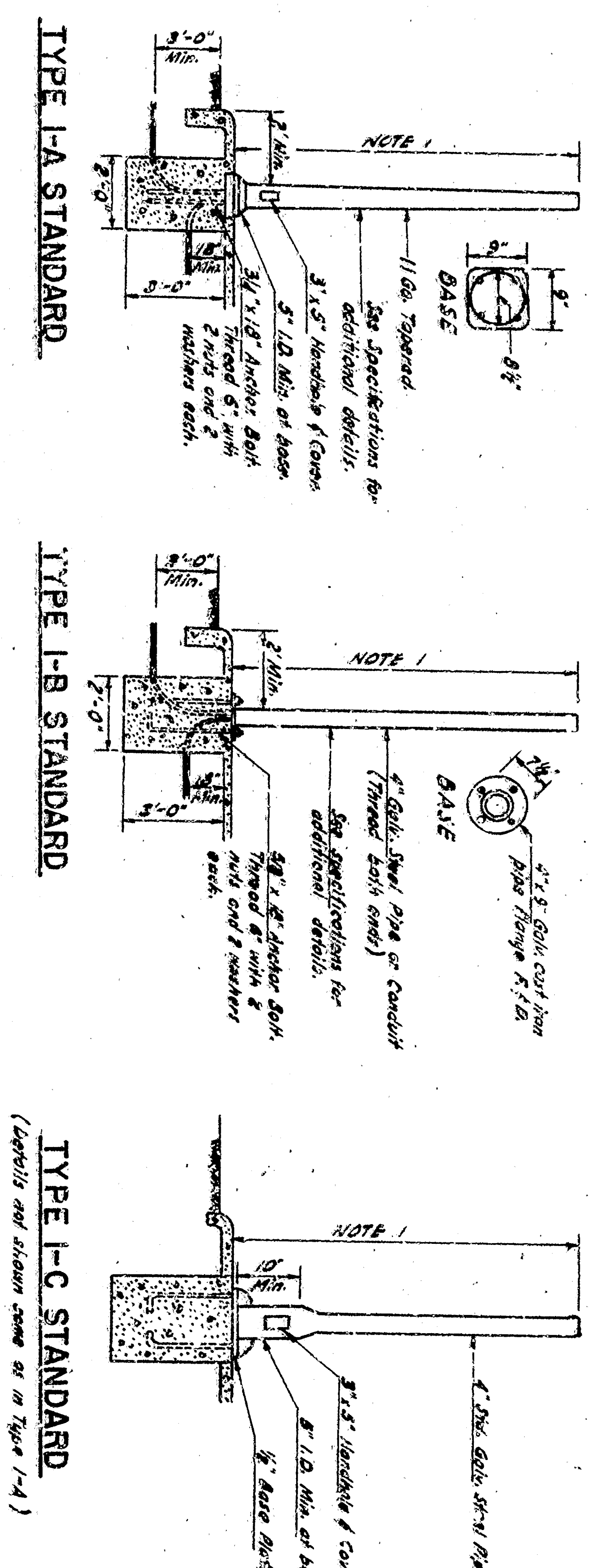


- SIGNAL STANDARDS**  
NO. 1000
- NOTES: 1. STANDARDS SHALL BE 10'-0" MINIMUM FOR VERTICAL SIGNALS, 7'-0" FOR HORIZONTAL SIGNALS AND LEFT-TURN SIGNALS.  
2. SEE PLAN FOR TYPE OF SIGNAL MOUNTING.  
3. TOP OF STANDARD SHALL BE 4'-8" O.D.  
4. CONDUIT SHALL EXTEND 2' MAX. ABOVE FINISHED SURFACE OF PAVEMENT MINIMUM AND FOR TYPE I-A I-C STANDARDS SHALL BE 2'-0" ABOVE FINISHED SURFACE.  
5. ONE ANCHOR BOLT SHALL BE BOWED TO CONDUIT.



CITY OF SAN BERNARDINO		CITY OF SAN BERNARDINO	
MEADOWBROOK PROJECT AREA NO. 1 CALIF R-10		TRAFFIC SIGNALS LIGHTING	
ACCEPTED BY <i>BCH</i>	SUBMITTED BY <i>Joseph S. ...</i>	REGISTERED CIVIL ENGINEER	DRAWING NO. 2273